

EN

Sights and tours in Kriens



kriens.ch/tourist
kriens-tourismus.ch

ens (centrum)

Kriens-Mattenhof



1 : 25'000
500m

Emergency calls

- 112 general emergencies
- 117 police
- 118 fire service
- 144 medical assistance
- 145 Ton info

Dialing on of these digits numbers is free of charge.



Explanations of these numbers in other languages

| | | |
|------------------------------------|----|--|
| Mount Pilatus and Pilatus Cableway | 6 | |
| Forest «Hochwald» and moorland | 8 | |
| Eigenthal | 9 | |
| Renggloch and Rengg Gorge | 10 | |
| Dams on Mount Pilatus | 11 | |
| Schauensee Castle | 12 | |
| Mount Sonnenberg und Cable car | 13 | |
| Wolfsschlucht Gorge | 14 | |
| Bellpark Kriens | 15 | |
| Museum at Bellpark | 16 | |
| Fountain at Bellpark | 17 | |
| Hergiswald Pilgrimage church | 18 | |
| Camino de Santiago | 19 | |
| Hergiswald bridges | 20 | |
| B-Sides Festival | 21 | |
| Wandbild Schweighof | 22 | |
| Townhall Kriens | 23 | |
| Historic Townhall | 24 | |
| Swimming pool Kriens | 25 | |
| Leisure ground Langmatt | 26 | |
| SCHAPPE Kulturquadrat | 27 | |
| Bell-Areal | 28 | |
| Hydropower in Kriens | 29 | |
| Vineyard and Amlehngarten | 30 | |
| St. Gallus church | 31 | |
| Kriens Trail (Weg um Kriens) | 32 | |
| Traditions in Kriens | 33 | |
| Christmas market at Bellpark | 34 | |
| Industry and Culture Trail | 35 | |
| Gabeldingen Orphanage | 36 | |
| Kampus Südpol | 37 | |
| District Court - Villa Bleiche | 38 | |
| Pilatus Arena | 39 | |
| Agricultural Kriens | 40 | |
| Hotels, Restaurants, Shoppings | 41 | |

Piktogramme

- Ausflugs
- Familien
- Kindererlebnis
- Landschaft/Natur
- Historisches
- Museum / Kultur
- Sehenswerter



Welcome to Kriens

We warmly welcome you to Kriens. Nice to having you here.

This brochure is intended to give you some ideas of what you can do here with us. No matter whether you live here for a day, a week or even permanently.

You will surely discover a lot more. Because Kriens is ultimately what we all make out of it on a discovery tour. Thanks to its location, Kriens and the surrounding area have a lot to offer.

We hope you enjoy it!

City of Kriens
Kriens tourism

➤ kriens.ch/tourist

Kriens im August 2020

Herausgeber: Stadt Kriens und Kriens Tourismus

Konzept, Recherche, Texte, Grafik: Benedikt Anderes (amk.ch)

Fotonachweis: Hardy Konzelmann, Benedikt Anderes, Simon Müller, Pilatus Bahnen, Fabienne Krummenacher, Emanuel Ammon





1



Mount Pilatus and Cableway

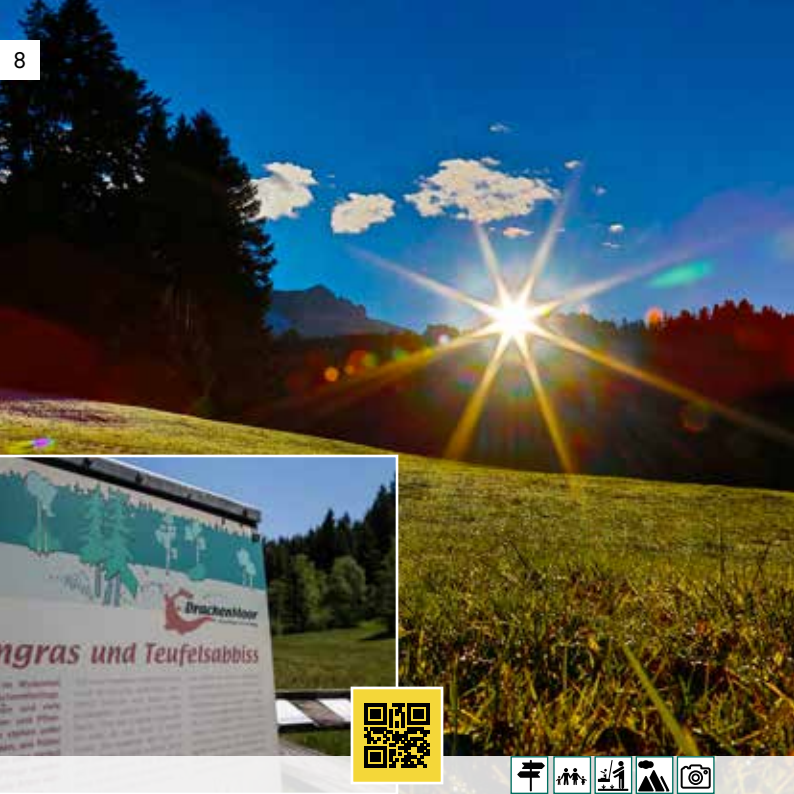
Pilatus cableway allows you to explore Kriens' imposing Mount Pilatus from two sides: From Kriens, you can glide on the aerial cableway over Krienseregg to Fräkmüntegg. From there, the “Dragon Ride” panorama gondola will take you up the 2,1232-metre Mount Pilatus. From the other side of the mountain - Alpnachstad - the world's steepest cogwheel railway climbs Mount Pilatus with a maximum gradient of 48 per cent.

Pilatus is a popular destination for tourists from all over the world and a local recreation area with virtually no end of options, including a rock path, rope park, dragon glider, summer toboggan run, “Pilu-Land” playground and other attractions. From Mount Pilatus, guests can enjoy spectacular views over Lucerne and the Central Plateau on the one side and across the Obwalden and Nidwalden Alps to Uri on the other. Pilatus takes you into the wild and unspoilt world of the mountains - right on Kriens' front doorstep.

➤ [pilatus.ch](https://www.pilatus.ch)



Kriens lower terminus (Talstation): Schlossweg 1, 6010 Kriens, +41 41 329 11 11
vbl bus nos. 1 and 5 to “Kriens Zentrum - Pilatus”, then walk
(around 10 minutes).



2



Forest and moorland

The Forest of Kriens (Krienser Hochwald) is both a unique local recreation area and a rich habitat for many endangered species of flora and fauna in Switzerland. An extensive network of walking and hiking trails, numerous mountain huts / restaurants and signposted cycling routes make the Forest of Kriens an impressive leisure and activity area on 210 hectares (200 football fields) for the entire population.

Visitors to Krienseregg can take the Dragon Moor hiking trail to learn all about the history and the extraordinary rich flora and fauna around Mount Pilatus with its protected moors and fens .

Between Fräkmüntegg and Krienseregg there is a reserve for the endangered and timid capercaillie. These birds do not migrate south in winter, but sleep on trees - and therefore have very special needs.

➤ pilatus.ch/drachenmoor



Starting point: Krienseregg
Pilatus cableways from Kriens to the halfway station at "Krienseregg".
Footpaths from Kriens Information trail free of charge



Eigenthal

Right on Kriens' front doorstep lies Eigenthal, an alpine valley with a very special charm. The hiking area is one of the most beautiful in Central Switzerland. On over 100 km of marked and signposted hiking trails, guests can explore the area, experience nature and let their eyes roam over the panoramic views. Krienseregg and Fräkmüntegg, Mount Pilatus, Mittag-güpfi, and last but not least UNESCO Biosphere Entlebuch are worthwhile destinations that are easy to reach from there.

Eigenthal also boasts geocaching trails. Equipped with the right app, guests can search for hiding places on their own or book a geocaching team event.

↗ eigenthal.ch



Access from Kriens-Obernau or via Malters-Schwarzenberg.
Postbus no. 71 from Lucerne Station



Renggloch and Rengg Gorge

Narrow cleft at the upper end of Kriens Valley, where it meets the Central Plateau. The road is an important connection both from Entlebuch and Emmen to Obwalden and Nidwalden in order to bypass neuralgic traffic nodes at Seetalplatz and in the Sonnenberg Tunnel. The Rengg Gorge is an imposing, narrow section of the Renggbach, which can carry a lot of water from the streams of Mount Pilatus in rough weather. Around 30 streams discharge their waters into the Renggbach, which flows through the Renggschlucht Gorge to the Kleine Emme. Geologists say that the Renggschlucht Gorge is one of the most interesting geological sites of the Central Plateau. It was formed by a glacier. In the 18th century, the inlet over the gorge was blasted because the outlet was repeatedly blocked, leading to devastating floods in Kriens and Lucerne. The Renggschlucht Gorge is easy to reach using the steps from Rengglochstrasse, and a pedestrian bridge offers spectacular views. Exciting hike over the gorge bridge with a scenic viewpoint overlooking the Central Plateau.



From Rengglochstrasse
vbl line 1 to Stampfeli station, then footpath through Schachenwald Forest to
Rengg gorge (approx. 20 minutes)



Dams on Mount Pilatus

For over 100 years, people on Mount Pilatus have been struggling with the huge amounts of water that rush into some 30 streams during storms and thunder downhill into the Renggbach. 1738 was the last time a storm caused the Renggbach to overflow and cause major flooding and damage in Kriens, Lucerne and Horw.

Today, the wild waters are tamed by a system of around 700 dams out of wood, stone and concrete to prevent flooding in Kriens and Lucerne. Rocks, stones and wood carried by the water now float on top and no longer block the outlet.

You can observe the dam system during a hike along the Stössweg path (start at the Stalden shooting range, hiking towards Krienseregg). The hiking trail from Stalden along the Rotbach with its ultra-steep steps (not suitable for small children) is a particular challenge.

[↗ documentary about river master Werner Haas \(check out the QR Code\)](#)



Footpath from Stalden shooting range.
Postbus no. 71 to the Stalden shooting range. Then take the Stössweg path above the shooting range towards Dorschnei



Schauensee Castle

Historical Schauensee Castle is the landmark of Kriens, perched on a rocky outcrop over the town centre. The castle owes its name to its unique views of Kriens, the city of Lucerne and Lake Lucerne. It was built back in the 12th century.

Around 1960 construction work was planned on the hill below Schauensee Castle. The people of Kriens decided that they preferred to own the castle themselves and voted for its purchase by the municipality. Since then the castle has been owned by the city of Kriens. The castle is open for events and can be visited at regular intervals during guided tours. The castle gardens are always accessible.

Both the castle and castle gardens serve as a venue for events like weddings, birthday parties, retreats or business meetings. The castle can also be booked for civil weddings.

➤ schloss-schauensee.ch



vbl lines 1 and 5 to "Kriens Zentrum - Pilatus", then walk to the castle (around 25 minutes): Past the lower terminus (Talstation) of the Pilatusbahn cableway, via Schlossweg to the castle. Use the Pilatusbahn parking spaces. Only few parking spaces at the castle.



Historic funicular railway

More than 115 years old, Sonnenbergbahn is a historic funicular railway and Swiss heritage site. It connects the centre of Kriens with the local recreation area on Sonnenberg mountain. Its two passenger cabins are still largely preserved in their original condition.

The funicular was built in the days of Belle Époque tourism in Central Switzerland. The local recreation area on Sonnenberg mountain offers visitors a full-on nature experience, activities (miniature golf) and the Zwergenweg trail - a circular hiking trail to the Wolfsschlucht Gorge, where you can relive the Swiss children's story of the "Sun Dwarf and the Little Blue Train".

The upper terminus (Bergstation), where the old hotel once stood, now also serves as a venue for popular events ("B-Side" open-air festival). The vintage train ride up the mountain makes these events a very special experience.

➔ sonnenbergbahn.ch - ➔ sonnenzwerg.ch



Lower terminus (Talstation): Eigenheimstrasse, 6010 Kriens.
Only few parking spaces. Hofmatt, Lindenpark or Schappe car parks.
vbl lines 1 and 5 to "Kriens Zentrum - Pilatus". 5-minute walk



Wolfsschlucht Gorge

The mystical Wolfsschlucht Gorge on Sonnenberg mountain is truly worth a trip. Geologists cannot explain how the gorge was formed, so it is something like an unsolved mystery of the Kriens region. You can access it from two sides on the circular trail on Sonnenberg mountain and enjoy a fascinating wilderness with steep, rugged slopes.

The rocky landscape is a popular recreation area for youth organisations from Kriens. Historically, Wolfsschlucht Gorge also played a role in ore and coal mining on Sonnenberg mountain during World War II.



Various footpaths.
Easiest starting point: Sonnenbergbahn upper terminus (Bergstation)
There are only few public parking spaces on Sonnenberg mountain



Bellpark Kriens

Bellpark in Kriens is a park in the heart of the city centre with a long tradition. It was originally created as an English-style landscape garden. Its giant redwood trees with their thick trunks and the footpath system through the park have remained its hallmarks until this very day.

Open on the side facing Luzernerstrasse, the park has become part of the living space of the people of Kriens.

All three buildings of the original park are still standing today. They are now in public use: “Villa Florida” (built in 1911 for Kriens industrialist Theodor Bell, now home to “Museum im Bellpark”), “Villa Concordia” (now a children's day care centre) and “Villa Daheim” (“Heinrich Walther Haus” - after-school children's centre).

Playground, recreation space, museum with a café



vbl lines 1 and 5 to “Hofmatt - Bellpark”
Free admission to the park



Museum at Bellpark

Museum im Bellpark is a forum for photography, history and art, which causes a stir in culture circles even far beyond Kriens time and again.

Since 1991, Museum im Bellpark has been housed in the former Villa "Florida", built in 1911 by the international hotel architect Emil Vogt. Every year Museum in Bellpark organises five exhibitions in the fields of art, photography and history.

It has a local history archive and is building a collection of Swiss drawings.

Exhibitions and events, a library and café make this museum a place of encounter and cultural interaction.

bellpark.ch





Village fountain at Bellpark

From 1918 the octagonal fountain had stood on the village square. Built as a fountain of peace “to celebrate the conclusion of peace after the long world war”, it served as a historical memorial, standing in the spot where the French had invaded in 1798 and where a freedom tree had marked the entry of the Swiss troops after the defeat of the Sonderbund in 1847. In 1964 it had to make way for the redevelopment of the city centre and it now stands at the entrance to Bellpark.

The octagonal basin is made out of grey Gotthard granite, while its column of greenish granite is from Andeer. The fountain column is decorated all around with four bronze medallions created by the Lucerne sculptor Hugo Siegwart. They feature the portraits of four famous sons of Kriens: Friedrich Degen (Lord Mayor and National Council member, 1848-1913), Melchior Schnyder (teacher, Grand Council member and chronicler, 1774-1858), August Bell (founding father of Kriens' industrialisation, 1814-1870) and J.G. Krauer (author of the Rütli song, 1792-1845).

Today, liverymen use the fountain on the day after the carnival procession to wash their purses.



vbl lines 1 and 5 to “Hofmatt - Bellpark”



Hergiswald Pilgrimage Church

Hergiswald is a pilgrimage site on the road to Eigenthal that is of art-historical importance. The former hermitage is now a beautiful place of rest and contemplation, offering magnificent views across the valley. Hergiswald is considered the most important pilgrimage site from an art-historical point of view in the Canton of Lucerne. Its ceiling frescoes, Loreto chapel and Felix altar as well as many other features make it unique in Europe.

Can be reached on foot from Obernau (via the old Hergiswald Bridge and the Prügelweg trail with twenty pillars, corresponding to the twenty Mysteries of the Rosary), by car or Postbus.

[↗ hergiswald.ch](http://hergiswald.ch)



Access via Kriens-Obernau and Hergiswaldstrasse. Parking spaces right above the church.
Postbus no. 71 from Lucerne Station to "Hergiswald". Timetable: sbb.ch



Camino de Santiago

Kriens is a location of one stage of the European Camino pilgrimage route, which leads from all over Europe to Santiago de Compostela in Spain.

The stage in Kriens leads from Lucerne via Hergiswald Chapel to Werthenstein. The new Gasthaus Hergiswald - built by the well-known architect Gion A. Gaminada - is a striking multi-storey wooden building, which was built using only douglas wood from Lucerne forests.

The guesthouse plays an important role as a stop for pilgrims and is well worth a visit.

➤ jakobsweg.ch

➤ gasthaushergiswald.ch



Access via Kriens-Obernau and Hergiswaldstrasse. Parking spaces right above the church.

Postbus no. 71 from Lucerne Station to "Hergiswald". Timetable: sbb.ch



Hergiswald bridges

Kriens boasts two unique bridges: On the road to Hergiswald, two bridges cross the Renggbach. The historical wooden bridge was built by Lucerne master carpenter Josef Ritter in 1791. In 2016 it was faithfully restored to its original condition after numerous alterations.

Ever since, road traffic has been routed across the new Hergiswald bridge built directly next to it. Since 2020 it has been named “Conrad Escher Bridge” - after the eponymous hydraulic engineer who laid the foundations for taming the Renggbach with around 600 dams in the streams on Mount Pilatus. It is considered the longest wooden suspension bridge in Switzerland.

Information board on the bridge about the technology behind the wooden suspension bridge





B-Sides-Festival

The “B-Sides” open-air music festival, which is known far beyond Central Switzerland, takes place on the Krienser Sonnenberg on several days in early summer. The name of the festival still says it all today: the music selection is based on contemporary, often alternative forms of music (the former B-sides of vinyl records). The focus is on indie and rock.

The overall experience of this event, which is integrated into nature, is part of the festival experience for the approximately 5,000 visitors. After the ride on the nostalgic Sonnenbergbahn, visitors enjoy the overwhelming mountain panorama. An initiative team builds an actual experience world for each day of the festival, which is strongly influenced by the principle of sustainability. The festival center is located on the gravel square right next to the Sonnenbergbahn station.

➤ [b-sides.ch](https://www.b-sides.ch)



vbl lines 1 oder 5 to "Kriens", 10 min walk to the cable car



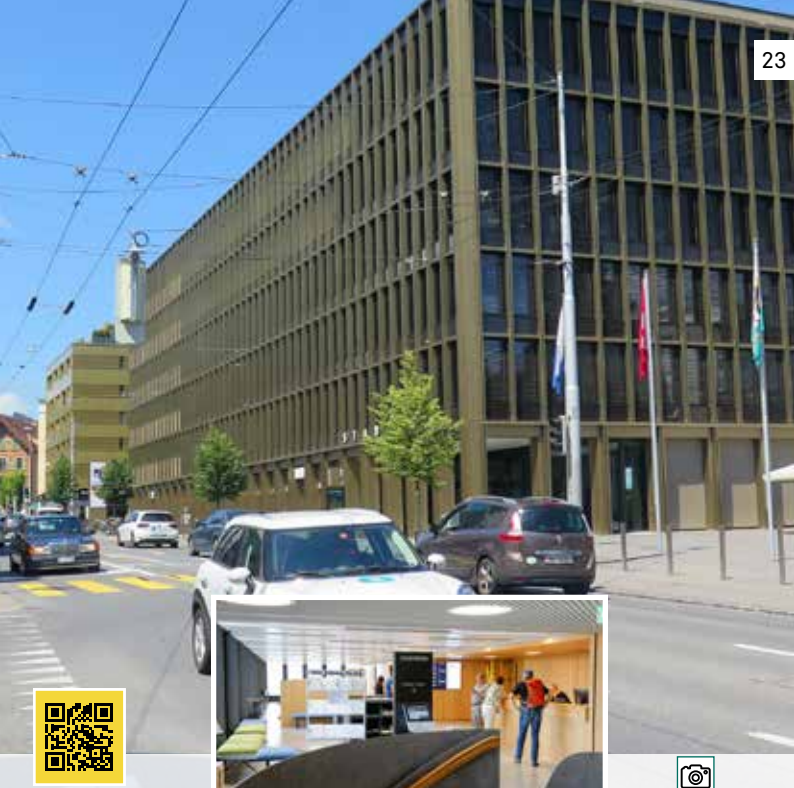
Facade image

In the newly created Schweighof district, three houses were built, the northern facades of which were decorated with pictures by the Lucerne painter Robert Zünd (1827 - 1909) along the entire height of the buildings.

The extraordinary facade images show what the landscape there looked like over a hundred years ago. The houses at Schweighofweg 6 and 8 show Zünd's picture "Schellenmatt" in two parts, each on a facade. For the house at Schweighofweg 12, the choice fell on the picture "The Harvest".

By painting the landscape images, "depth and width are built up" so that there is always something for the viewer to discover. The images refer to the former landscape there and provide a snapshot of the people living back then. In the modern, highly dense urban settlement, a strong, lively contrast is created between yesterday, today and tomorrow.





Townhall Kriens

Townhall Kriens was opened on 1 January 2019. The new building is the heart of a restructuring plan for Kriens city centre, creating a customer-friendly one-stop centre for all municipal services in Kriens: Stadtbüro Kriens.

The Stadtbüro concept focuses strongly on the idea of a customer-friendly administration, concentrating all services in one central location.

The Stadthaus also boasts the city of Kriens' large function space - Pilatussaal (450 visitors).

The old Bahnhofli (built in 1886) is located on the town square directly in front of the town hall. The building is reminiscent of the time when Kriens was still served by a railway («Kriens-Luzern-Bahn»). It ran in mixed traffic on Luzernerstrasse from the Kupferhammer to the Bell industrial works. The historic building is considered worthy of protection and is currently being expanded by a private cooperative into a meeting point.

➤ kriens.ch/stadtbüro





18



Historic townhall

The historic townhall is a listed building that served as Kriens' townhall until 2018. It was designed by the Lucerne architect Emil Vogt. Built on the former Schützenplatz in Kriens, the city's administration moved there in 1912.

The building is a magnificent example of Art Nouveau style. From the very beginning it reflected the different purposes it was designed for. Even today, different types of windows on all floors as well as shutters and Venetian blinds as distinguishing features bear witness to this.

The sandstone building's striking roof underlines the architect's intention to combine tradition with modernity. In the industrial city of Kriens this roof paid homage to peasant traditions. In style and importance, the roof was inspired by the large farmhouses of the era.

Since the administration's move to the new Stadthaus, it has been used as an office building.



Schachenstrasse 13
vbl lines 1 and 5 to "Kriens Zentrum - Pilatus".
"Lindenpark" car park right behind Altes Gemeindehaus



Parkbad Kriens

In the summer months, Parkbad Kriens invites you to cool off and have fun in the pool. In addition to its swimming and diving pools and a paddling and play area for children, Parkbad offers a nature adventure pool.

Thanks to natural water purification, chlorine-free bathing is possible at Parkbad Kriens. With its nature swimming pool, Kriens offers a bathing facility with a beach and recreation area right in the city centre.

Outside Parkbad's opening hours the grounds can be used as a park.

The complex is located right next to the "Kleinfeld" football stadium and is close to Mettlen playground on Schlundstrasse.

➤ parkbad-kriens.ch



Horwerstrasse 24

vbl lines 1 and 5 to "Schachenstrasse" or "Hofmatt - Bellpark".

Parking spaces in front of Parkbad. Use "Hofmatt" multi-storey car park



Langmatt leisure grounds

At Langmatt on the road to Obernau, Langmatt leisure grounds can be used free of charge. The grounds offer a pump track, grass play area, climbing frame, mega slide and many other attractions. In addition, the grounds are located directly on Krienbach river

This is where young people from the neighbourhood and from all over Kriens can meet for shared experiences and playful adventures.

Langmatt has received awards from the UNESCO's children's organisation UNICEF for its exemplary expansion and development with the participation of children, young people and parents.



Use of the grounds free of charge.

vbl line 1 to "Feldmühle". There are **no parking spaces** at the grounds. Parking spaces at the Obernau, Feldmühle or Meiersmatt school facilities.



SCHAPPE Kulturquadrat

The old buildings of the former Schappe silk mill were converted into a youth and culture centre and opened in 2018.

With rooms of various sizes, SCHAPPE Kulturquadrat is now a meeting place for Kriens' culture scene and serves as a venue for numerous events.

Theatre performances and concerts take centre stage in the large Schappesaal, and live debates and festivals are on the agenda. The second part of the building is a hub for youth work in Kriens (info bar, bistro, club), while the third part of the complex houses Kriens Music School with classrooms and rehearsal rooms. With "Galerie Kriens" and studios of numerous artists, the fourth part of the Kulturquadrat building is devoted to the creative arts.



Obernauerstrasse 1, 6010 Kriens. At the Kriens bus loop.
vbl lines 1 and 5 to "Kriens Busschleife" (Kriens bus loop).
Use the "Schappecenter" multi-storey car park



Bell-Areal

The large industrial area in the heart of Kriens bears witness to the city's industrial heritage - and simultaneously pays homage to its growth and development from a rural village through a crafts and trade-focused community to an independent city.

The Krienbach river was the driving force behind the settlement of many commercial enterprises. Kriens owes its breakthrough to industrialisation largely to August Bell: In 1855, he added a (textile) machine factory to his horsehair mill founded in 1845 along the Krienbach river. This factory diversified rapidly: From 1860 it produced paper machines, steam engines, turbines, railway bridges for the Gotthard line, and from 1876 even funiculars. It was later taken over by Heinrich Wachter, then Escher Wyss, and Andritz Hydro.

The site is currently being repurposed as production is being outsourced. Now it is to offer residential, office and leisure spaces - room for a completely new part of town.



At Kriens bus loop
vbl lines 1 and 5



23



Hydropower in Kriens

Until well into the 11th century, agriculture and forestry were virtually the only sources of income in Kriens. Later, trade started developing thanks to the Krienbach river, as its water power was able to drive machines by means of water wheels. However, since the Krienbach did not always carry the same amount of water, the so-called Ehehaften Canal (ehehaft = legally valid) was already constructed in 1592 to channel water from the Renggbach into the Krienbach from an equalising reservoir in Obernau.

A complex system of natural and manmade feeders and diversions made it possible to drive a whole series of water wheels. Behind the Feldmühle school house you will find a testimonial of the 19th century, The stamp mill In bygone days the stamp mill in Obernau served to produce tanbark out of the crushed bark of red fir and oak trees, which was used by tanners in Lucerne to process leather. Later it was used as a bone crusher for the production of agricultural fertiliser.



Ehehaften Canal: Access via the Mittlerhus quarter
 Chnochespampfi: Feldmühle school house, vbl line 5 to "Feldmühle"
 Free admission



24



Vineyard and Amlehngarten

The Unterhus land was bequeathed to Kriens by Martha Wenger, a daughter of Kriens, on condition that it should be home to a model agricultural site.

The Unterhushang is used as a vineyard. Ecological aspects have a very high priority and are strictly observed. The vineyard on Sonnenberg mountain offers stunning views of the Central Swiss Alps. A hiking trail leads right through the vineyard and offers anyone interested the opportunity to admire the diversity of species in the vineyard and the unique views. At the “Alpenstrasse” bus stop you will find the third part of the complex, the publicly accessible “Amlehngarten”. Martha Wenger’s former private garden has now become a woodland garden with old trees. Starting from the old garden, the whole area was enlarged into a park, preserving its unspoilt natural character. Information boards provide further details.

weingut-sonnenberg.ch



vbl lines 1 and 5 to “Schachenstrasse”
Access to the vineyard via the Mittlerhus quarter



St. Gallus Church

For over 900 years the “Parish Church of St. Gallus and Othmar” (better known as St. Gallus Church) and the parish have shaped religious life in the centre of Kriens in word and deed.

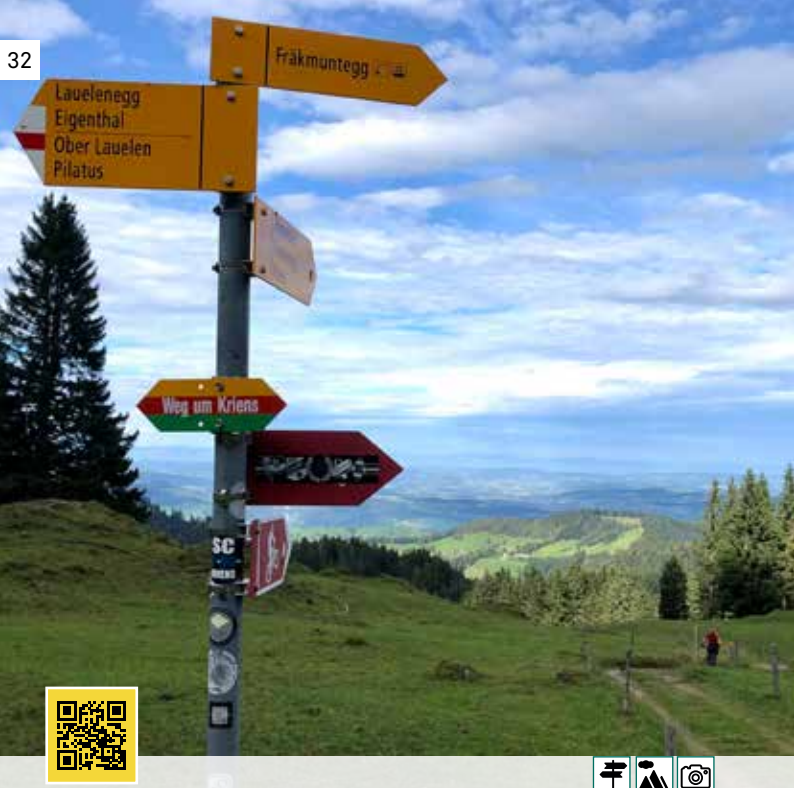
The initial construction of the church is said to date back to the year 1100. In 1552 the church was damaged by a storm. In 1589 it was probably converted or even rebuilt. A reused door at the entrance to the chapel of rest, which bears the date 1589, serves as an indication of this. The exterior was most recently restored in 1984/85 by architect Gabriel Wey from Sursee.

He aimed to create a sense of harmony between the earlier structural changes. In addition, the tower was repainted in white. St. Gallus, to whom the church is consecrated, is the central figure of Kriens’ coat of arms, and St. Gallus Day (16 October) is still a public holiday in Kriens

The historical chaplaincy (“Pfrundhaus”) at Kirchrainweg is worth a visit.



Kirchrainweg 5, 6010 Kriens
vbl lines 1 and 5 to “Kriens Zentrum - Pilatus”. Via Kirchrainweg or steps to the church.



Kriens Trail (Weg um Kriens)

The hiking trail was a project of a secondary class at Obernau School. It was originally inspired by Kriens' location between two local recreation areas on the Sonnenberg and Pilatus mountains.

The trail is signposted ("Weg um Kriens") and takes hikers on a path around the city's borders encircling the entire area of Kriens.

Because 50 per cent of Kriens' territory consists of woodlands (especially the forest at the foot of Mount Pilatus), the Kriens Trail gives you a good hike through the Alpine foothills on certain stretches, while others pass through urban neighbourhoods.

➤ kriens.ch/wegumkriens



You can join the trail wherever you like - see map



Traditions in Kriens

Traditions are very important in Kriens and they are celebrated in many events all the year round. They include the Geisslechlöpfe and the Saint Nicholas procession. Unique carnival (fasnacht) traditions have also developed in Kriens over the last two hundred years.

The fasnacht figures with the traditional hand-carved wooden masks such as the Chrienser Deckel, the Wöschwiib and the Bärnerwiib represent characters that date back to the French Revolution.

Kriens' traditional events are coordinated by the Galli guild. Founded in 1922, it now engages in activities all the year round - the main public events being on 8 December (St. Nicholas procession) and on Shrove Tuesday (carnival event with a parade on the day before Ash Wednesday).

➤ gallizunft.ch





Christmas Market in Bellpark

A large Christmas market has been staged in Kriens' Bellpark for many years. The market under the giant redwood trees stands out for its unique setting. Fairy lights and decorated booths create a magical atmosphere in the park, which is where everybody meets during the time of the market; and it exerts a rare fascination not only on those who love Christmas markets.

Mostly local arts and crafts, delicious food and entertainment are combined with Kriens traditions (visit of the Gold Saint Nicholas of the Galli Guild for children) as well as a stage with live musical performances.

➔ weihnachtsmarkt-im-bellpark.ch





MIT DER APP INDUSTRIE- UND
KULTURWEG KRIENS.
JETZT DOWNLOADEN: WWW.IK-KRIENS.CH

TURBINENHALLE DER BELL MASCHINENFABRIK, KRIENS UM 1904
FOTO EMIL KREIS © MUSEUM IM BELLPARK



Industry and Culture Trail

The Krienbach river and relocation of polluting industries from the city of Lucerne boosted Kriens' commercial and industrial development. Documents provide evidence of a cloister mill, a bleachery, four sawmills, stamp mills and a municipal powder mill, which still exist in many street and field names.

From the end of the 16th century Kriens developed into a hub for commercial production in the field of metal processing. A hammer mill, file mill, weapon maker, nail mills, floss silk mills and a copper hammer mill were the hallmarks of Kriens' townscape.

With its interactive Industry and Culture Trail, Kriens - together with private institutions - wants to pay homage to this period, which had a significant impact on the development of Kriens.

It requires a smart phone app that will be available in autumn 2020.

➔ ik-kriens.ch (german only)



You can join the trail anywhere you like

Central starting point: Info Point at corner Bellpark / Güterschuppen



Gabeldingen Orphanage

A walk to what is now Gabeldingen School in Kriens is really worthwhile. The hike itself and the location of the school building perched above Kriens offer you fascinating panoramic views.

But it also gives us an opportunity to reflect on a dark chapter of our history.

The house was once built as a “Christian reformatory” for Catholic boys by the Swiss Charitable Society. Orphans and illegitimate sons were housed there.

In 1944, articles by reporter Peter Surava in the left-wing Die Nation caused a stir and it ultimately had to be closed down. The articles exposed the appalling conditions in the reformatory: (too much) hard work instead of education, a poor diet, severe punishments.

A plaque at the school entrance now serves to commemorate its deplorable past. The children were abused by depriving them of their freedom under the guise of care (“indentured child labour”); the state thus violated its duty of supervision.





Kampus Südpol

In the Kriens municipal area, several cultural businesses have emerged in the immediate vicinity of Lucerne's Allmend. As a whole, they form the Kriens "Culture Mile", an important driver of the music city of Lucerne.

- **Südpol:** Since February 2008, part of the former slaughterhouse has been used as a multi-disciplinary venue for local, national and international artists from the music and performing arts. Since its opening, the building has also been used by, among others, the Lucerne Theater (rehearsal stage) and the music school of the city of Lucerne.
- **Lucerne University – Music:** It offers diverse and innovative study, research and further education opportunities.
- **Orchestra House:** The Orchestra House of the Lucerne Symphony Orchestra is a meeting place for generations and music enthusiasts of all kinds. Trial operation. Chamber music concerts.





District Court - Villa Bleiche

Villa Bleiche looks back on an eventful history: It was built in 1800/1801 as a villa for the renowned and established Xaver Degen family of entrepreneurs. With the F. Degen pasta factory in the “Teiggi” complex, it was one of the driving forces behind Kriens’ industrialisation.

In 1945 Villa Bleiche was taken over by the municipality of Kriens and converted into a courthouse for Lucerne-Land Local and District Court. Various conversions and repurposing projects had left their mark on the building, which is of major importance from a cultural history aspect.

Because the district court soon needed a lot more space, an extension had to be built. It was carefully designed by the city of Kriens at the turn of the millennium and the old building was completely refurbished inside and out.

Today the appearance of the old building does justice to its status as an important culture site for Kriens and the region’s cultural history. The new building constitutes an elegant synthesis of the old and the new and a meticulous architectural achievement.





Pilatus Arena

The largest and most modern event arena in Switzerland is currently being built in Kriens: the Pilatus Arena. A modern multi-purpose arena for around 4,500 visitors is being built at Mattenhof train station. It will be available for sports, cultural and trade fair events from around mid-2025. The arena will additionally enliven the newly created district at Mattenhof train station and will therefore play an important role not only as an event location, but also in urban development.

The Pilatus Arena is entirely privately financed. The required funds (around 55 million francs) will be generated through the sale of the residential and commercial premises in the two 114 and 55 meter high buildings to the left and right of the hall. The 114 meter high residential tower will be one of the tallest residential buildings in Switzerland.

➤ pilatusarena.ch





Agricultural Kriens

Today Kriens is the second busiest city in the canton of Lucerne. However, numerous farmhouses and barns still bear witness to the once agricultural area. In 2022 there were still over 130 farmhouses in Kriens - around 1900 there were said to have been over 200.

They bear witness to the profound upheaval that Kriens has experienced. In addition to large industrial companies (Bell machine factory, Schappe spinning mill, etc.), commercial companies also settled as suppliers to the industry. Demand for housing increased, which increased pressure on agricultural land. As a result, many farms lost their livelihood and rented out the remaining cultivated land.

135 surviving agricultural buildings still bear witness to this period. Many of them - such as the oldest farmhouse Unter-Ey (from 1693, big picture) - are now used as residential buildings. Various sacred buildings (Ebersrüti Way Chapel, around 1750, small picture) are still reminiscent of that agricultural time.





Shopping malls in Kriens

Pilatus Markt

Ringstrasse 19, Kriens

Monday to Thursday 9 a.m. to 7 p.m.

Friday 9 a.m. to 9 p.m.

Saturday 8 a.m. to 5 p.m.

Sunday closed

[↗ pilatusmarkt.ch](https://www.pilatusmarkt.ch)

Hofmatt

Luzernerstrasse 30, Kriens

Monday to Thursday 9 a.m. to 7 p.m.

Friday 8 a.m. to 9 p.m.

Saturday 8 a.m. to 5 p.m.

Sunday closed

Schappe Center

Obernauerstrasse 16, Kriens

Monday to Thursday 8 a.m. to 7 p.m.

Friday 8 a.m. to 8 p.m.

Saturday 7.30 a.m. to 5 p.m.

Sunday closed

[↗ schappe.ch](https://www.schappe.ch)

Stores

There are various smaller stores in Kriens with a wide range of products and offers. Mainly located in the city centre along Luzerner-/Obernauerstrasse as well as in Kriens-Mattenhof.

Hotels in Kriens



Bellpark Hostel

Luzernerstrasse 23, Kriens

T. +41 41 310 25 15

info@bellparkhostel.ch

➤ bellparkhostel.ch



Berghaus Dorschnei

Am Pilatus

T. +41 41 320 02 34

info@dorschnei.ch

➤ dorschnei.ch



Bergbeizli & Naturfreunde- haus Krienseregg

Forenmoos, Kriens

T. +41 41 320 77 98

info@berg-beizli.ch

➤ berg-beizli.ch



Holiday Inn Express Luzern - Kriens

Am Mattenhof 16, Kriens

T. +41 41 545 69 00

info@hiex-luzern.ch

➤ hiex-luzern.ch



Hotel Gasthaus Hergiswald

Hergiswald, Obernau

T. +41 41 320 00 32

info@gasthaushergiswald.ch

➤ gasthaushergiswald.ch



Hotel Ibis Luzern-Kriens

Industriestrasse 13, Kriens

T. +41 41 349 49 49

h2982@accor.com

➤ ibis.com/2982



Hotel Sonnenberg

Zumhofstrasse 258, Kriens

T. +41 41 320 66 44

info@sonnenberg.ch

➤ sonnenberg.ch



Appartements «Central»

Waldheimstrasse 1, Kriens

T. +41 41 620 73 73

info@lakelucerne-apartments.ch

➤ lakelucerne-apartments.ch



Appartements «Villa Marias»

Schachenstrasse 4, Kriens

T. +41 41 620 73 73

info@lakelucerne-apartments.ch

➤ lakelucerne-apartments.ch

2.2024

Restaurants in Kriens

- 1 Pizzeria Al Forno**
Luzernerstrasse 27
+41 41 311 10 22
↗ ristorante-alforno.ch
- 2 Café Vinothek Ambrosia**
Luzernerstrasse 18
+41 41 320 53 88
↗ velociped.ch/ambrosia
- 3 Café Bachmann**
Ringstrasse 19
+41 41 340 93 10
↗ confiserie.ch
- 5 Bettys Bistro**
Luzernerstrasse 7
+41 79 798 81 00
↗ bettys-bistro-kriens.business.site
- 6 Restaurant Artstätte**
Hinter-Buholz 110
+41 41 310 79 29
artstaette.ch
- 7 Coop Restaurant**
Ringstrasse 19
041 348 27 30
↗ pilatusmarkt.ch
- 8 Restaurant & Bar Chrüzi**
Fenkernstrasse 4
+41 41 320 24 50
↗ chruezi.ch
- 9 Fontana Restaurant & Bar**
Industriestrasse 15
+41 41 340 50 60
fontanakriens.ch
- 10 Da Marcello**
Schachenstrasse 15b
+41 41 559 28 00
↗ damarcello.ch
- 12 Habermacher
Bäckerei&Cafe**
Luzernerstrasse 24
+41 41 322 22 60
↗ beck-habermacher.ch
- 13 Gasthaus Hergiswald**
Hergiswald
+41 41 320 00 32
↗ gasthaushergiswald.ch
- 14 Ristorante Pizzeria Hofmatt**
Hofmattweg 6
+41 41 320 34 34
↗ pizzeria-hofmatt.ch
- 15 Bäckerei Café Hug**
Am Mattenhof 6
+41 41 250 31 54
↗ baeckerei-hug.ch
- 16 Jack's Cevap House Kriens**
Am Mattenhof 8
+41 41 361 22 22
↗ cevap.ch
- 17 Karma Take Away**
Gehrstrasse 1
+41 78 225 72 28
↗ karmatakeaway.business.site
- 18 Restaurant Krienseregg**
Krienseregg
+41 41 329 11 55
↗ pilatus.ch
- 19 Bäckerei Moos**
Amlehnstr. 48, Alpenstr. 31
+41 41 310 23 14
↗ beck-moos.ch
- 20 Koreana**
Gehrstrasse 3
+41 41 670 25 62
- 21 Kuonimatt Steakhouse
& Pizzeria**
Industriestrasse 9
+41 41 340 47 60
↗ restaurant-kuonimatt.ch
- 22 La Pasteria**
Luzernerstrasse 22
+41 41 558 65 91
↗ lapasteriakriens.ch
- 23 Linden Grill House**
Gallusstrasse 2
+41 41 322 23 54
lindengrillhouse.ch

24 Macchi Bäckerei

Schappe Center
+41 41 322 13 93

↗ macchi-baeckerei.ch

25 McDonald's Restaurant

Nidfeldstrasse 14
+41 41 340 63 63

26 MEZZO Esskultur

Luzernerstr. 32
+41 41 558 18 28

↗ traduemari.ch

27 Migros Restaurant Hofmatt

Luzernerstrasse 30
+41 41 329 65 69

28 Restaurant Mister Khan

Luzernerstrasse 44/46
+41 41 311 05 43

↗ misterkhan.ch

29 Café Morgenstern

Obernauerstrasse 9
+41 41 320 28 55

31 Nooch Asian Kitchen

Am Mattenhof 16a
+41 41 322 22 55

↗ nooch.ch/de/kriens-mattenhof

32 Restaurant Obernau

Obernauerstrasse 89
+41 41 320 43 93

↗ restaurantobernau.ch

33 Ranch

Grabenhofstrasse 5
+41 41 340 32 32

↗ ranch-kriens.ch

34 Schwyzerhüsli

Schwyzerhüsliweg 1
+41 41 320 21 31

↗ schwyzerhuesli.net

35 Cafe-Bar Siesta

Luzernerstrasse 63
+41 41 310 50 55

↗ cafebar-siesta.jimdofree.com

36 Hotel-Rest. Sonnenberg

Zumhofstrasse 258
+41 41 320 66 44

↗ sonnenberg.ch

37 Subway Kriens

Am Mattenhof 14
+41 41 201 71 20

38 Südpol

Arsenalstr. 28
+41 41 318 00 40

↗ sudpol.ch/bistro

39 ThaiKhon Kaen

Fenkernstrasse 2
+ 41 41 322 19 19

↗ thai-khonkaen.ch

40 Ristorante uno e più

Schappeweg 3
+41 41 320 09 09

↗ unoepiu.ch

41 Wirtshaus Wichlern

Wichlernstrasse 7
+41 41 320 54 31

↗ wichlern.ch

42 1944

Horwerstrasse 24a
+41 41 311 03 89

↗ sckriens.ch/restaurant1944

43 Ristorante Fratelli

Schweighofplatz 1
+41 41 320 79 85

↗ ristorante-fratelli.ch

44 Central chez Fabian

Waldheimstrasse 1
+41 41 329 83 83

↗ chezfabian.ch

45 Alag Bar

Am Mattenhof 14
+41 41 219 50 06

46 Schnauserei

Luzernerstrasse 1
+41 78 803 93 65

↗ schnauserei.ch

47 Parkbad Kriens

(nur während Badesaison)
Horwerstrasse 24
+41 41 311 28 43

46

Points of view



Shopping Facilities (see page 40)



Hotels (see page 41)

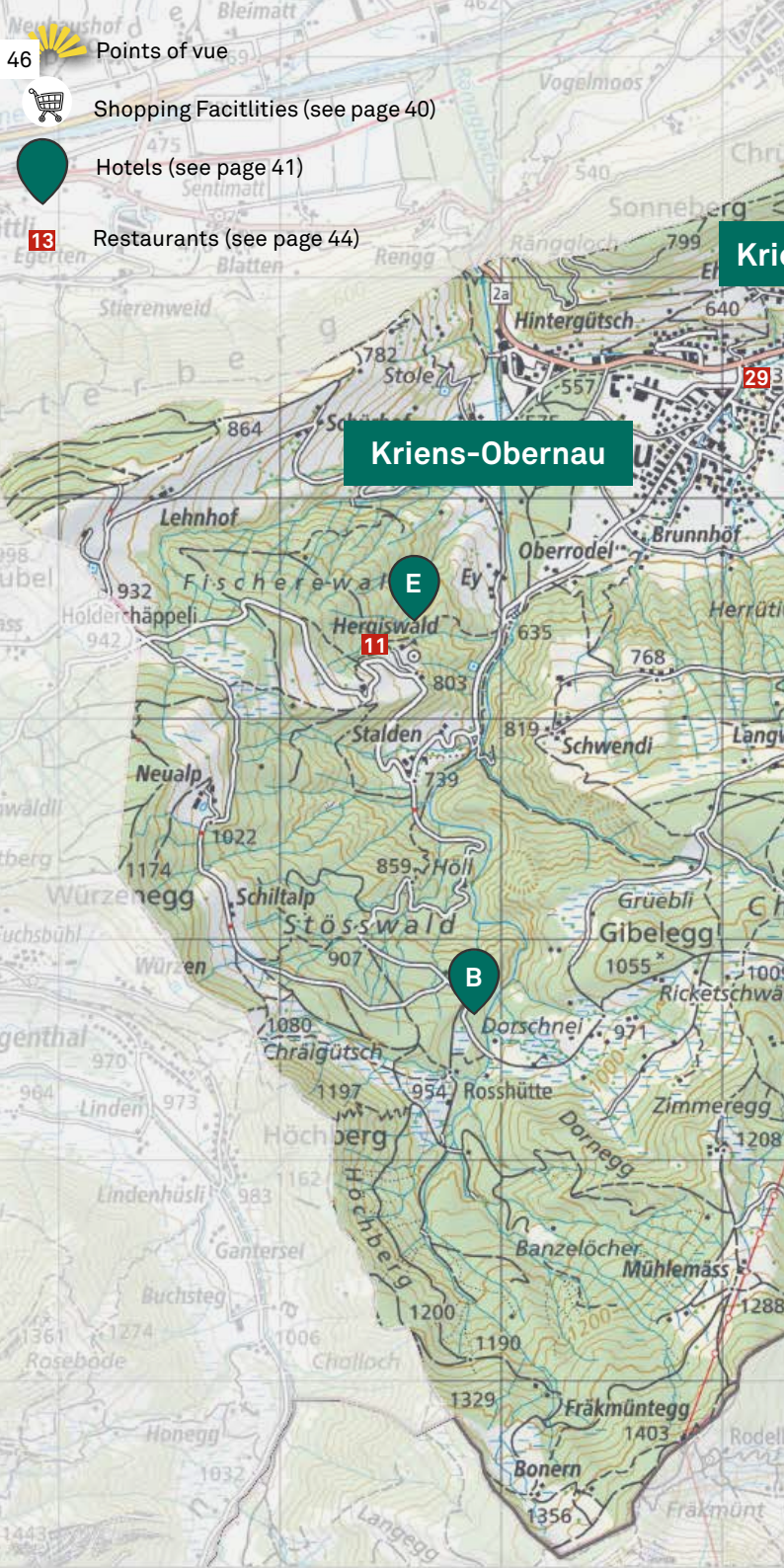
13

Restaurants (see page 44)

Kriens-Obernau

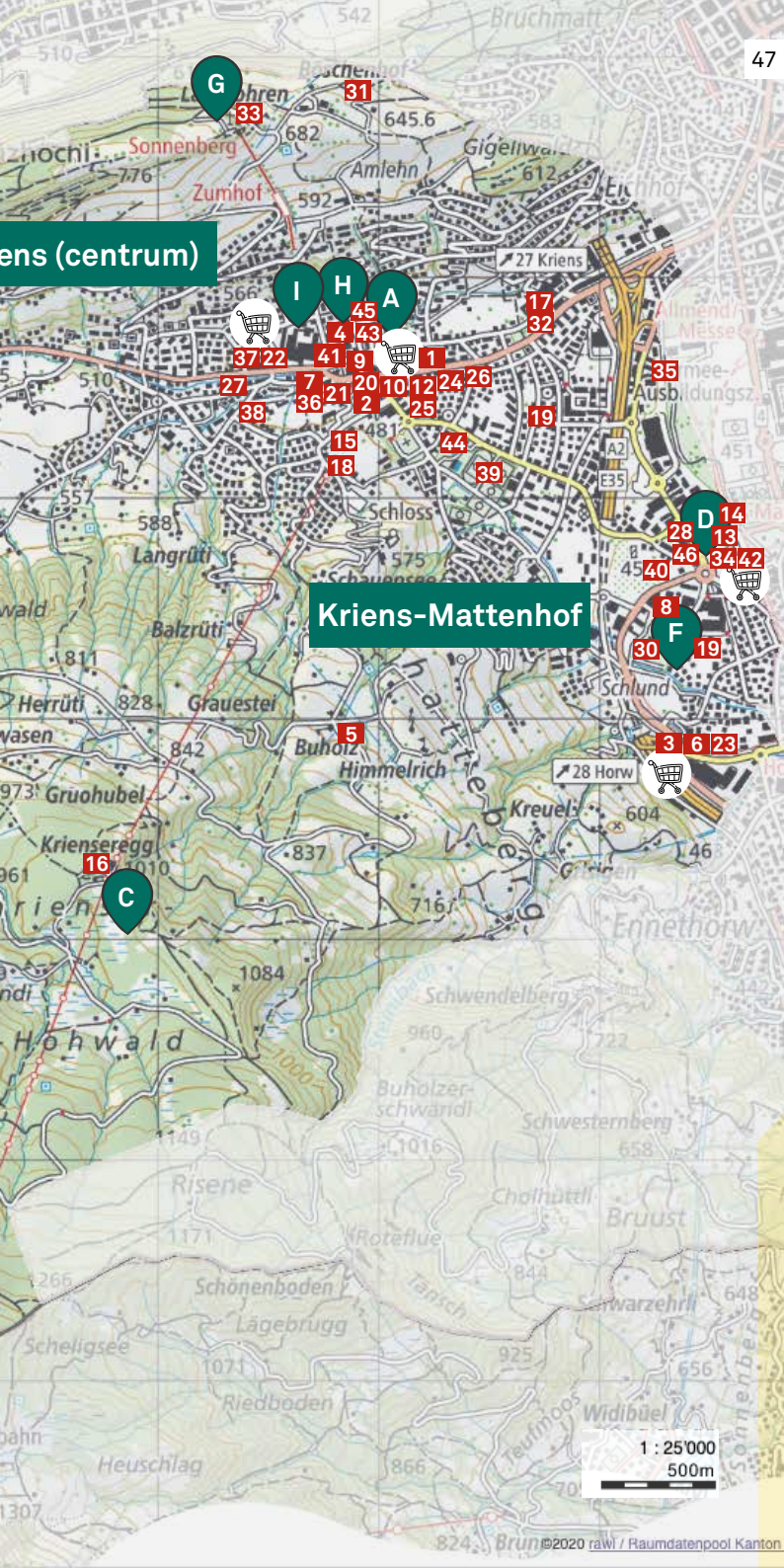


11



ens (centrum)

Kriens-Mattenhof



1 : 25'000
500m

Tourist Information



Tourist Information Luzern
Lucerne Main Station
Zentralstrasse 5
6003 Luzern

Monday to Friday
Saturday, Sunday

08:30-17:00

09:00-16:00

(Callcenter untill 13.00 Uhr)

Sunday

09.00-13.00

(Callcenter closed)

[↗ luzern.com](https://www.luzern.com)

Opening hours may be subject of change



City of Kriens
Stadtplatz 1
CH - 6010 Kriens

T. +41 41 329 61 11
info@kriens.ch

[↗ kriens.ch](https://www.kriens.ch)

kriens
TOURISMUS

Kriens Tourismus
CH - 6010 Kriens

T. +41 41 329 60 90
info@kriens-tourismus.ch

[↗ kriens-tourismus.ch](https://www.kriens-tourismus.ch)